



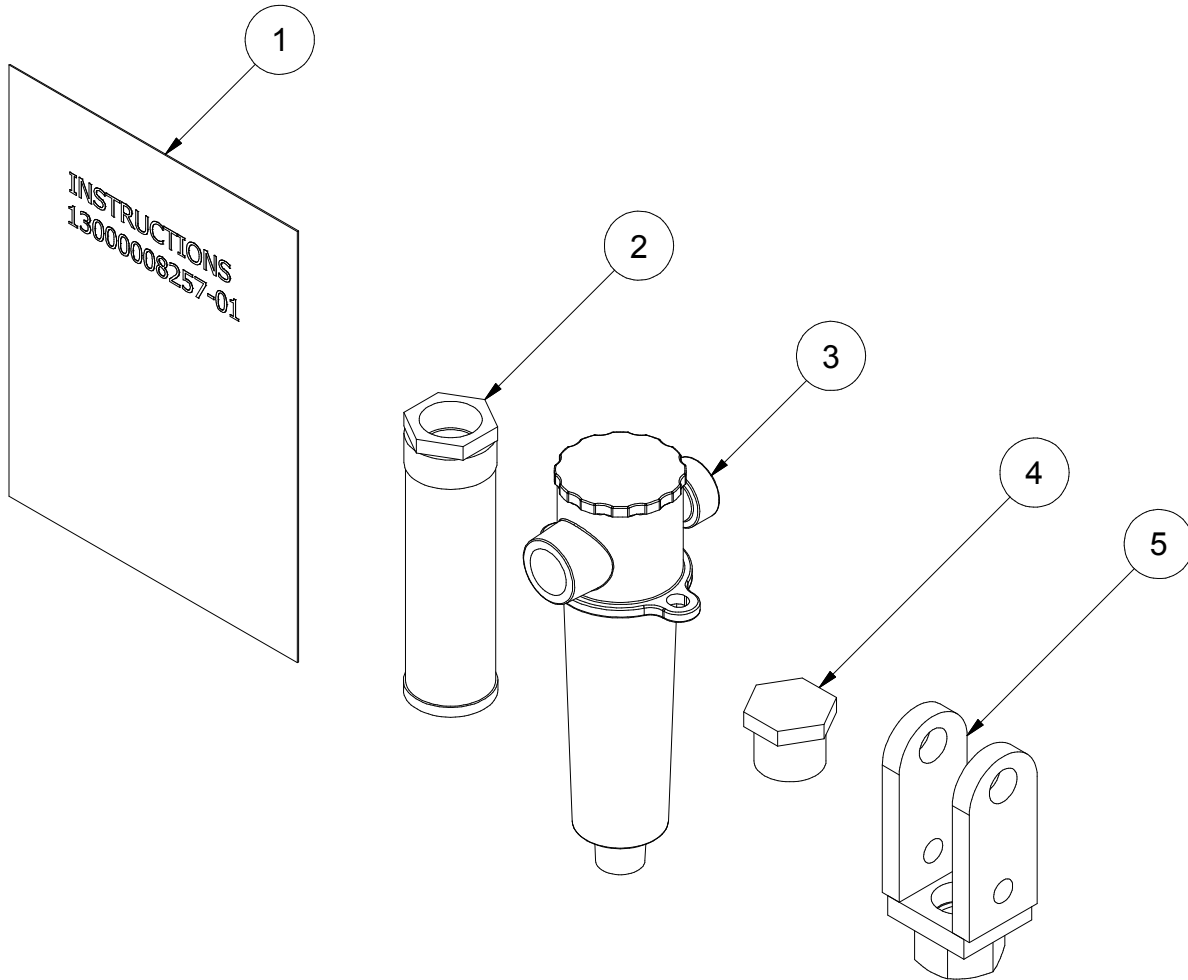
TO: Valued Customers and Dealers
RE: SolK HVST FC1545 Wheel Mover (First Prod. Run)
DATE: 17-May-2018
VERSION: 1
KIT #: 13000008257-00

This **SERVICE BULLETIN** applies to the HARVEST by MERIDIAN FC1545 Wheel Mover Kit PN: 13000PBFC15025.

These parts are required to complete the set-up for the FC1545 Wheel Mover as they were missing from the first Production Run Hardware Boxes.

Solk HVST FC1545 Wheel Mover

This kit will include the following components:

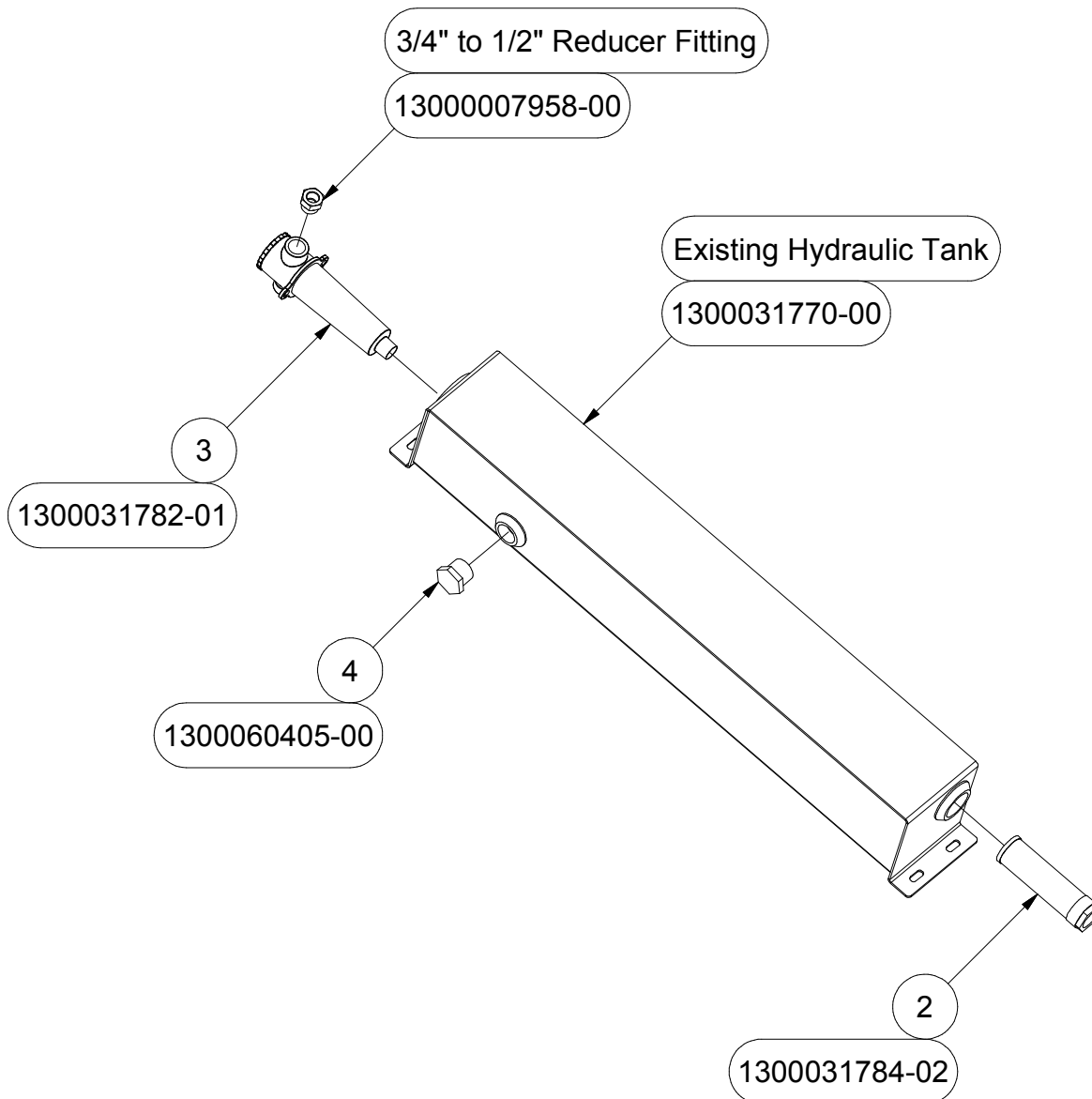


If any parts are missing, contact Meridian Warranty @ 1-306-373-8448

PARTS LIST OF PN# 13000008257-00			
REF #	PART #	QUANTITY	DESCRIPTION
1	13000008257-01	1	Instructions Solk HVST FC1545 Wheel Mover
2	1300031784-02	1	Suction Strainer - Hyd Tank - Wheel Mover - FC15XX
3	1300031784-01	1	Filter Asm - Hyd Tank - Wheel Mover - FC15XX
4	1300060405-00	1	Fitting Hyd Oil Eye Brass 1"-11 NPT
5	1300031771-00	1	Clevis Extension Wheel Mover FC1545

SoIK HVST FC1545 Wheel Mover

1. Secure the Oil Return (Item 3) to the Hydraulic Tank using 3/8" Socket Head Cap Screws provided in the Wheel Mover Kit, Bolt Bag PN: 1300060408.
2. Ensure the 3/4" to 1/2" Reducer Fitting is secured to the Oil Return (Item 3). This will connect to the 8MJ-8MB-90 X-Long Leg Fitting PN: 13000008108 that was supplied with the "Return to Valve" Bag.
3. Secure the Oil Eye (Item 4) to the side of the Hydraulic Tank.
4. Secure the Filter (Item 2) to the bottom of the Hydraulic Tank. This will connect to the 16MP-16MJ Fitting PN: 13000007960 that was supplied with the "Tank to Pump" Bag.



SoIK HVST FC1545 Wheel Mover

5. Thread the Cylinder Clevis (Item 5) completely onto the existing Lift Cylinder. Ensure it is oriented as shown below.
6. Secure the top of the Cylinder Clevis (Item 5) to the existing Cylinder Extension using the Hex Bolt and Stover from the previously supplied Wheel Mover Kit, Bolt Bag PN: 1300060072-00.

