

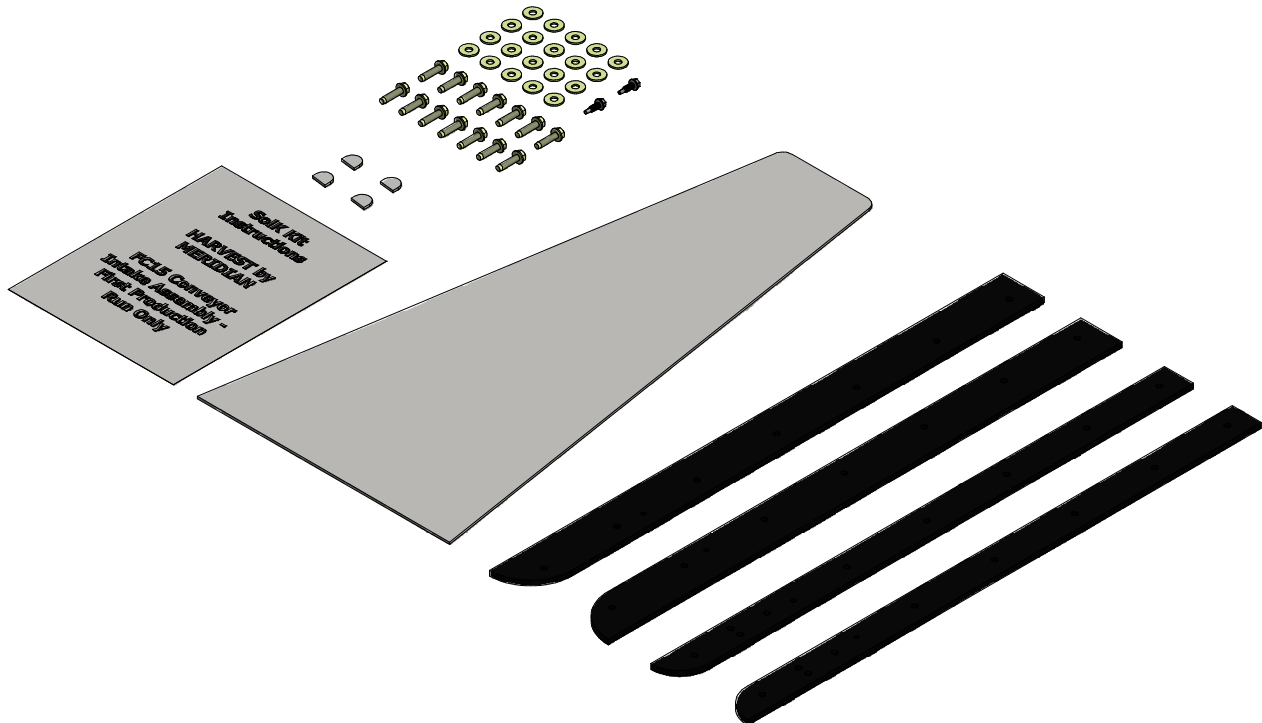
TO: Valued Customers and Dealers
RE: Intake Assembly - HVST FC15 - FIRST PROD. RUN
DATE: 30-Aug-2018
VERSION: N/A
PART #: 13000008435

This **SERVICE BULLETIN** applies to the addition and/or modification of parts to the **Harvest FC1535/45 Conveyor Assembly - FIRST PRODUCTION RUN ONLY**.

Failure to ensure that this procedure is completed will result in **Inefficient Operation of the Harvest FC1535/45 Conveyor Assembly and Excessive Product Loss Due to Several Operating Deficiencies.**

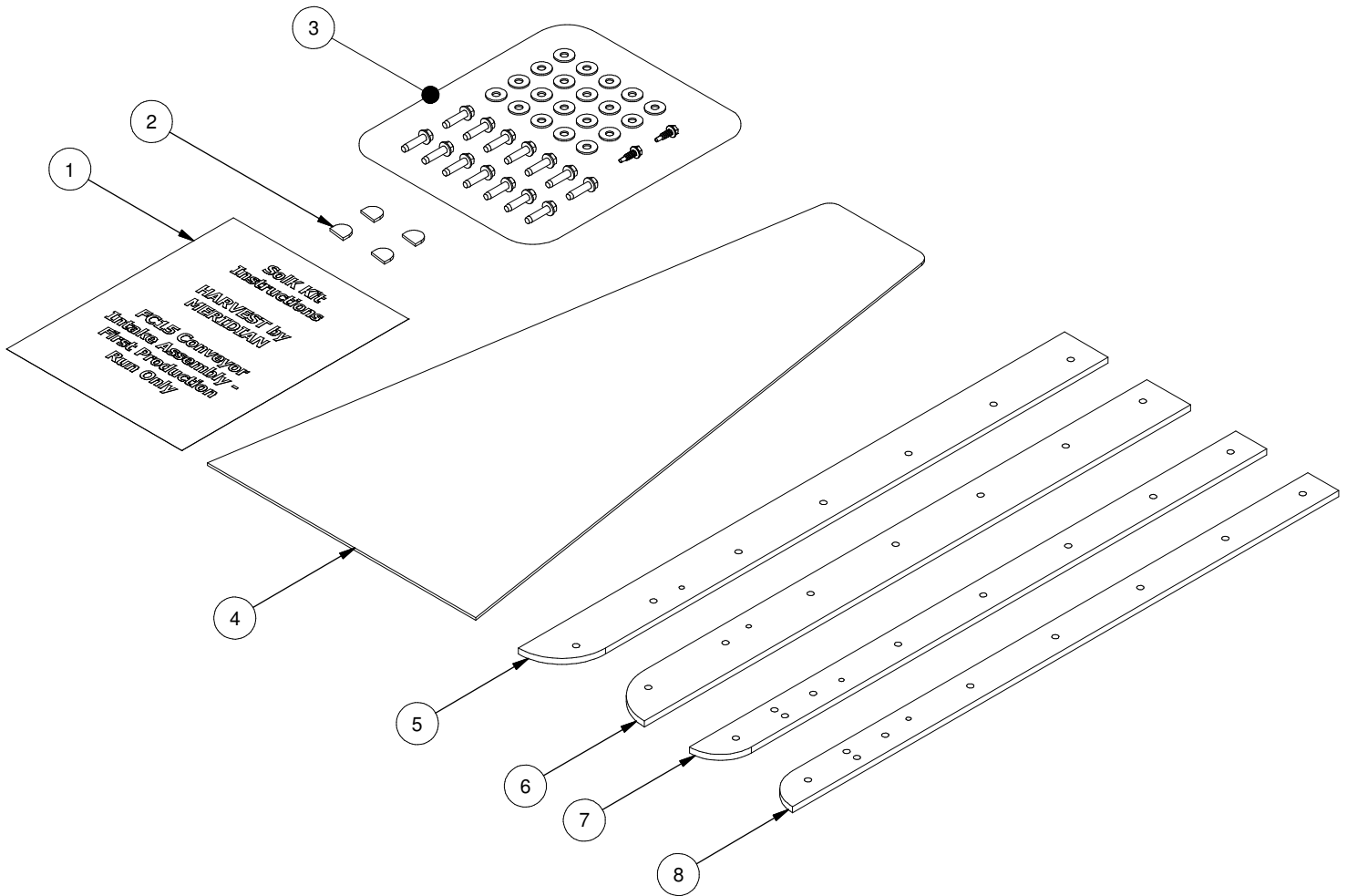
ALL customers **MUST** be informed upon purchasing their **Harvest FC1535/45 Conveyor Assembly - FIRST PRODUCTION RUN ONLY** that they must complete these modifications in order to operate the Conveyor Assembly properly.

These parts are required to complete the set-up for the Harvest FC1535/45 Conveyor Assembly as they were missing or incorrect from the First Production Run Hardware Boxes.



SolK - HVST FC1535/45 Conveyor Assembly

Note: This kit will include the following components listed below. Ensure all components listed are included in the kit. If any parts are missing, contact Meridian Warranty @ 1-306-373-8448.



PARTS FOR: 13000008435			
REF #	PART #	QUANTITY	DESCRIPTION
1	13000008435-01	1	Instructions SolK HVST FC15 Conveyor Intake Asm - FIRST PRODUCTION RUN ONLY
2	13000008458-00	4	Plate Cutout Filler Bottom Intake FC15
3	13000008440-00	1	Bolt Bag SolK HVST FC15 Intake Belt Flashing - FIRST PRODUCTION RUN ONLY
4	13000008441-00	1	Plate Pan Bottom Intake FC15
5	13000008436-00	1	Flashing RH Intake FC15
6	13000008437-00	1	Flashing LH Intake FC15
7	13000008438-00	1	Spacer Flashing RH Intake FC15
8	13000008439-00	1	Spacer Flashing LH Intake FC15

ASSEMBLY INSTRUCTIONS

READ AND UNDERSTAND ALL INSTRUCTIONS IN THIS SolK ***BEFORE*** BEGINNING THE ASSEMBLY OF THE HARVEST FC1535/45 CONVEYOR ASSEMBLY. FAILURE TO DO SO WILL RESULT IN UN-NEEDED REWORK DISASSEMBLING AND REASSEMBLING THE HARVEST FC1535/45 CONVEYOR ASSEMBLY. IF THE AUGER IS ALREADY ASSEMBLED, REWORK IS REQUIRED.

Assembly Notes:

- i. Before starting assembly, check the parts list to ensure all components are present.
- ii. All bubbled item numbers refer to parts found in the Parts List of Page 2.

SolK Notes:

The intention of this SolK is that the FC1535/45 Conveyor Assembly has not begun and NO PARTS have been assembled to the Conveyor Intake Frame yet. If the FC1535/45 Conveyor is already assembled, then the Intake Frame must be removed from the Conveyor Assembly. Disconnect the Conveyor Belt. Disconnect any parts on the Conveyor that are also connected to the Intake Frame - such as the Canvas Pull Cable. Remove the Intake Frame from the First Tube. Remove any parts fastened to the Intake Frame that might hinder the assembly of this SolK to the Intake Frame. Label ALL FASTENERS when removed from the Conveyor Assembly so they can be identified when the Conveyor is re-assembled. Once the SolK modifications have been made to the Intake Frame, the FC1535/45 Conveyor is to be assembled as normal following the Instructions in the FC1535/45 Assembly Manual. Once the FC1535/45 Conveyor Assembly is complete, then the final section of this SolK can be completed.

1. The Transition Plates welded on the interior sides of the Intake Frame need to be adjusted slightly to fit the Intake Bottom Pan Plate. Lightly Bend Up the Transition Plate Ends so the Intake Bottom Pan Plate will fit underneath. See Figure 1A and Figure 1B.

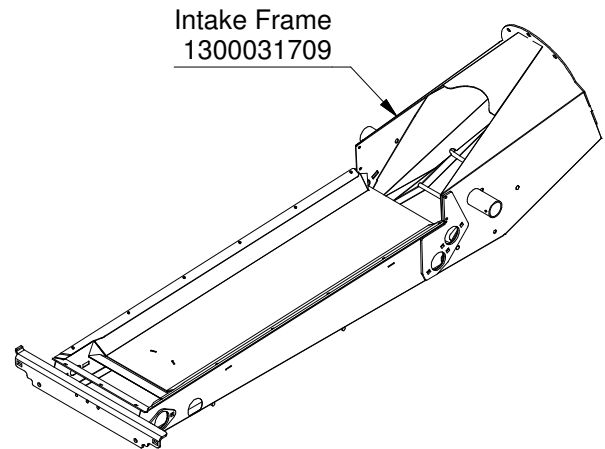


FIGURE 1A

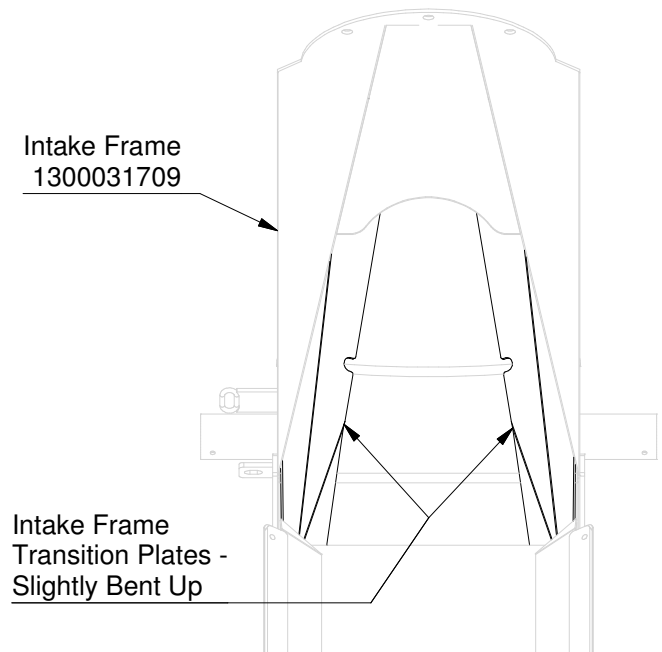


FIGURE 1B

ASSEMBLY INSTRUCTIONS

2. Flip the Intake Frame upside down. Place the Intake Bottom Pan Plate between the Intake Frame Transition Plates and the Hopper Support Rods as shown in Figure 2A. Spot weld the Intake Bottom Pan Plate as shown in Figure 2B.

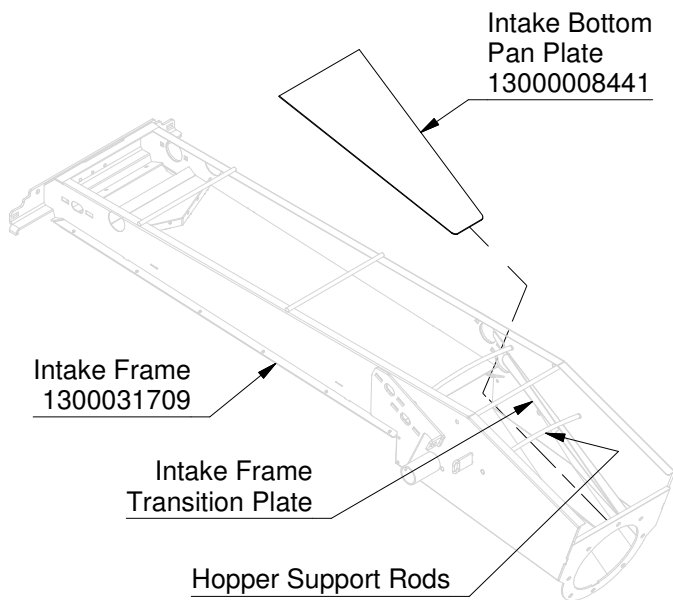


FIGURE 2A

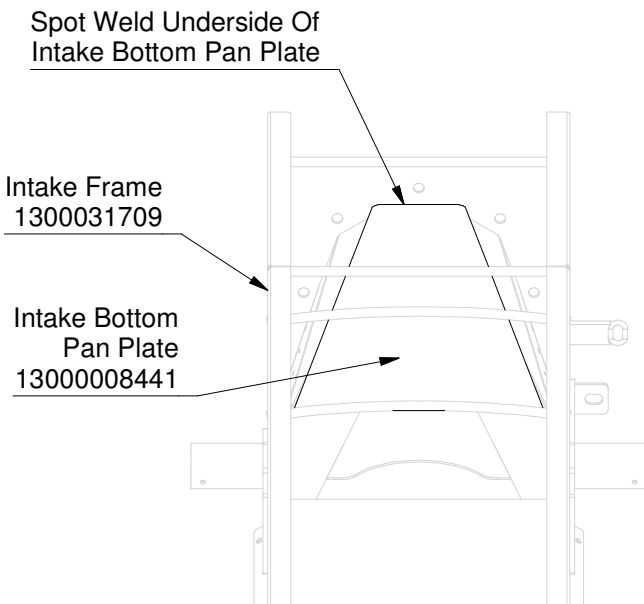


FIGURE 2B

3. Flip the Intake Frame right side up. Stitch weld the Intake Bottom Pan Plate to the bottom of Intake Frame Transition Plates as shown in Figure 3.

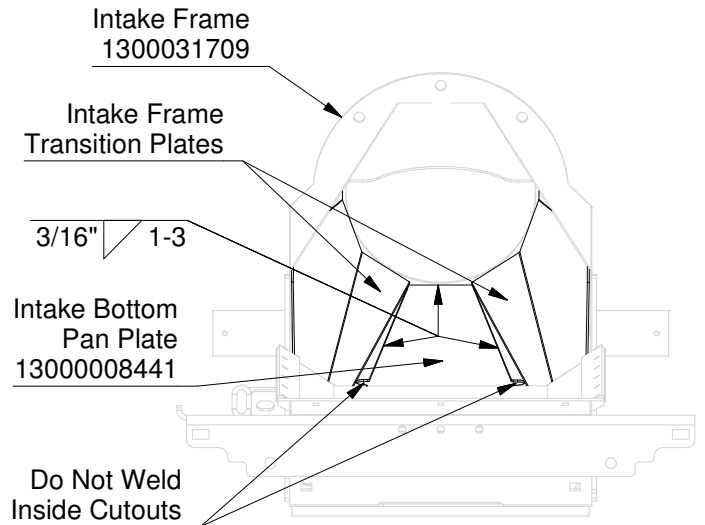


FIGURE 3

4. Place the Cutout Filler Plates into the cutout slots on the Intake Frame Transition Plates. See Figure 4.

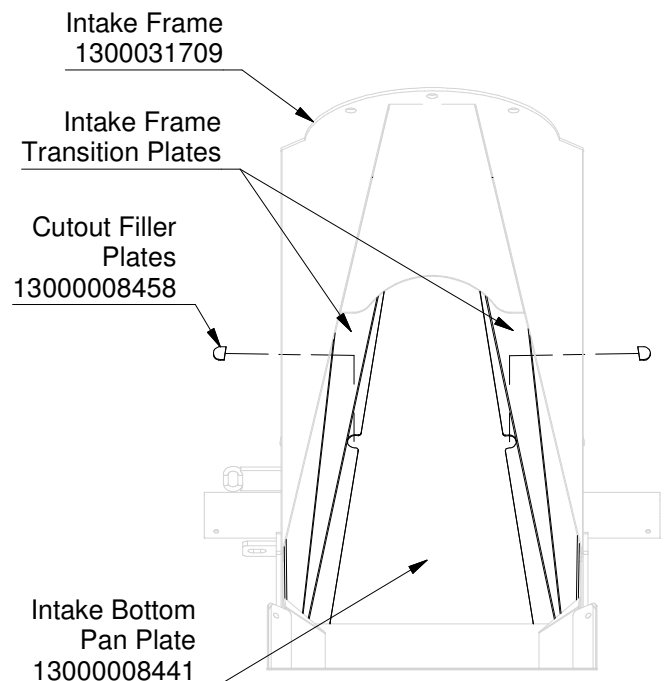


FIGURE 4

ASSEMBLY INSTRUCTIONS

5. Weld the Cutout Filler Plates to the Intake Frame Transition Plates and Intake Bottom Pan Plate. After welding in the Cutout Filler Plates, grind the welds flush with the top of Intake Frame Transition Plates. See Figure 5.

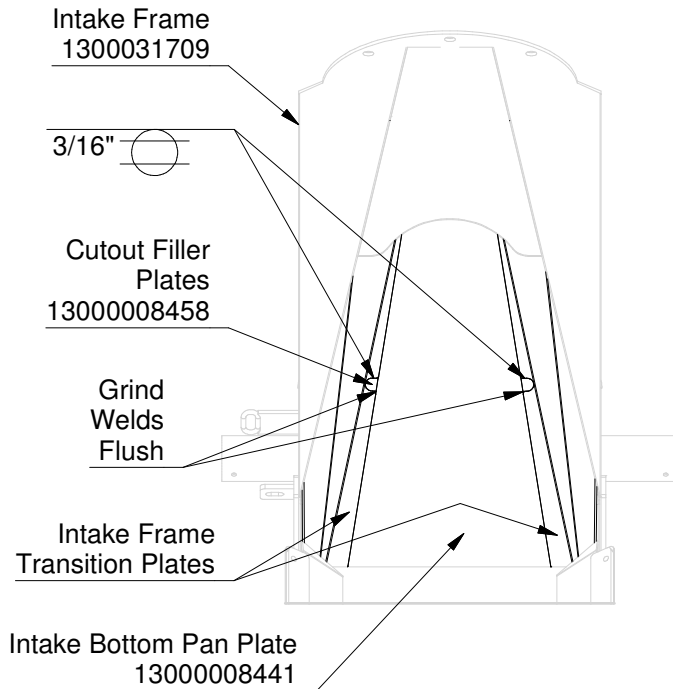


FIGURE 5

- 6A. On both interior sides of the Intake Frame Assembly, (7) 0.21" holes need to be drilled into each of the (2) Intake Frame Transition Plates. Mark out the hole locations as shown in Figure 6B. Care must be taken when drilling the holes to only drill into the Intake Frame Transition Plates and not through the exterior sides of the Intake Frame Assembly.

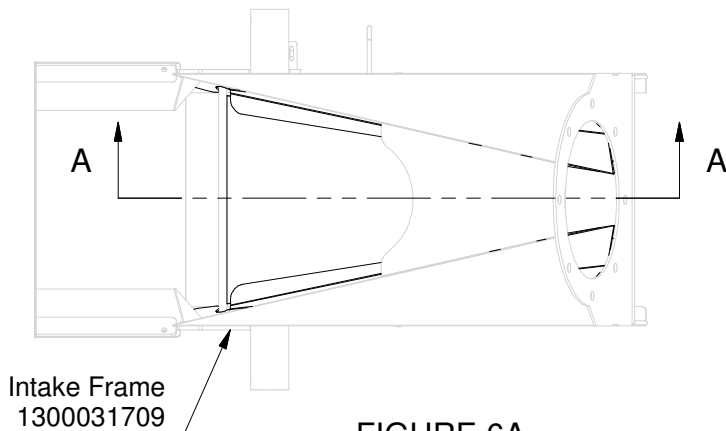


FIGURE 6A

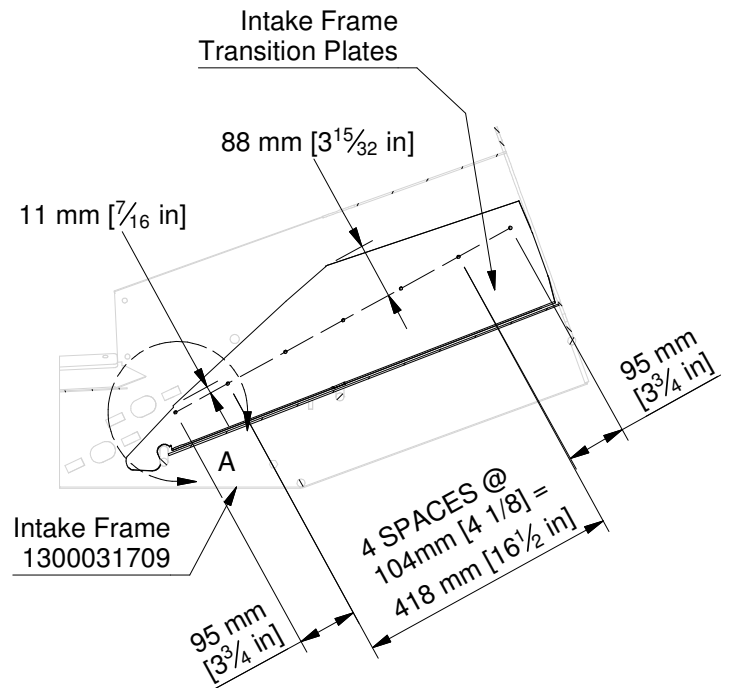
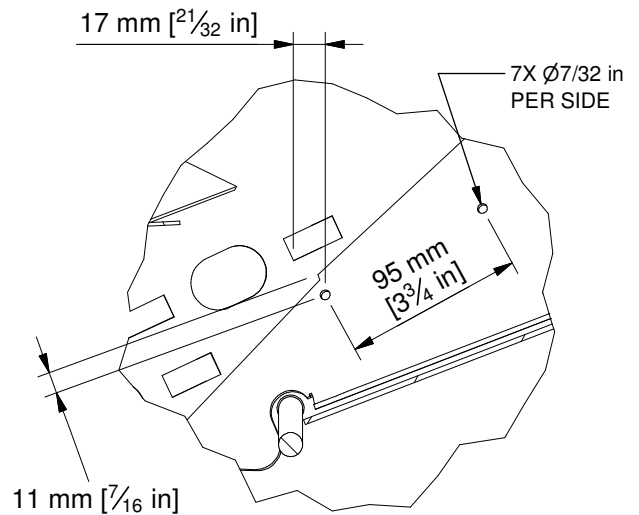


FIGURE 6B
SECTION A-A



DETAIL A
SCALE 1 : 4

- 6B. Test fit the Rubber Flashing Strips to ensure the holes line up properly. Once the Rubber Flashing Strips have been test fitted and the holes locations adjusted and drilled accordingly, remove the Rubber Flashing Strips. Complete the Main Conveyor Assembly according to the FC1535/45 Auger Assembly Manual.

ASSEMBLY INSTRUCTIONS

7. Once the Conveyor Assembly is complete and the Conveyor Belt is installed, fasten the Rubber Flashing Spacer Strips and Rubber Flashing Strips to the inside of the Intake Frame Assembly using (14) 1/4" x 1" Flanged Self-Tapping Screws and Flat Washers. The Nylon Slider Back of the Rubber Flashing Strips is to be facing the Frame Assembly and the 2 Ply Rubber Top is to be facing the center of the Conveyor Assembly. Use additional Flat Washers as Spacers where the Flanged Self-Tapping Screws hit the outside wall of the Intake Frame Assembly. Fasteners can be found in Bolt Bag 13000008440. See Figure 7.

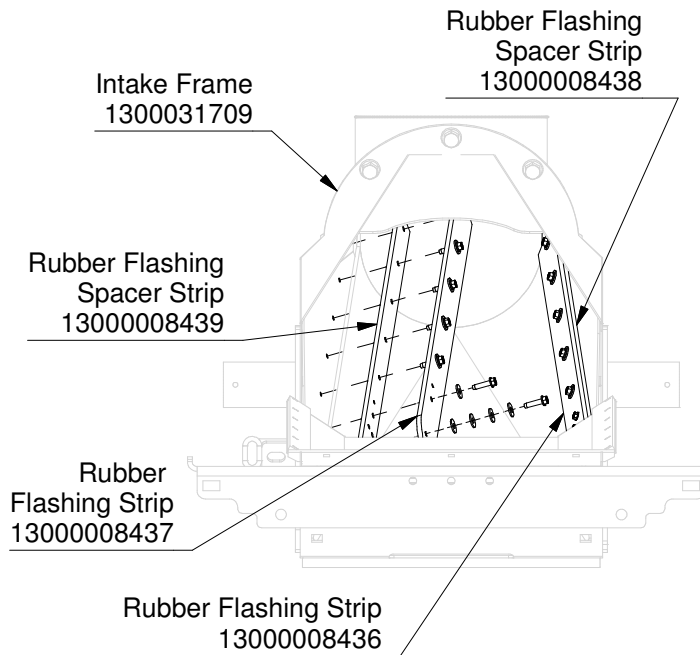


FIGURE 7

8. Once the Rubber Flashing Strips are fastened into place on the Intake Frame Assembly, fasten (2) #12 x 3/4" Self Drilling Screws to the Rubber Flashing Strips as shown in Figure 8. Fasteners can be found in Bolt Bag 13000008440.

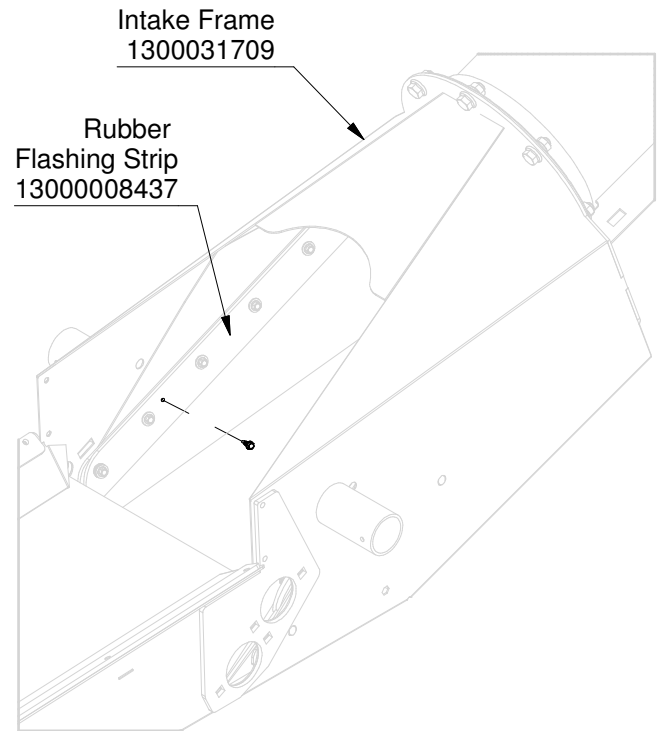


FIGURE 8

9. This completes the assembly of this SolK for the Intake of the FC1535/45 Conveyor Assembly.